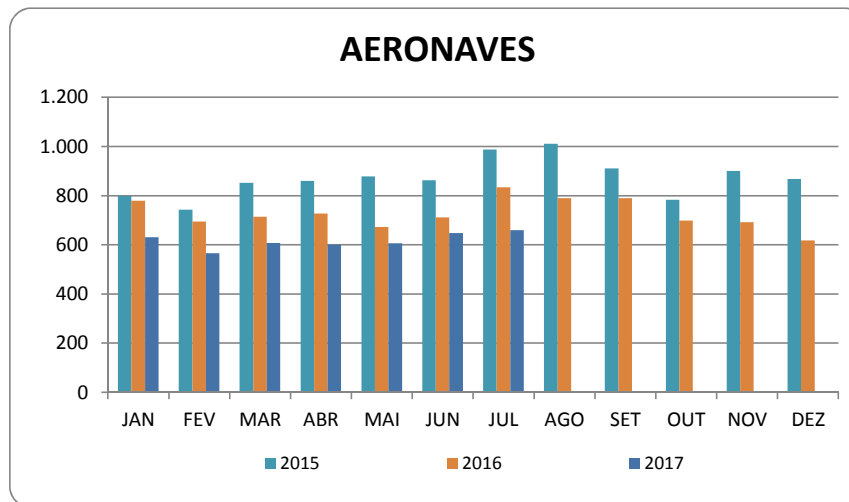




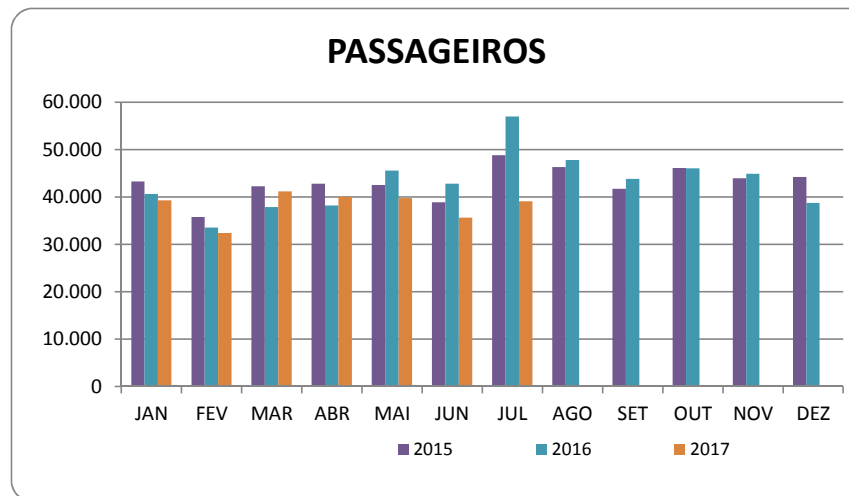
INFRAERO

## AEROPORTO DE JOINVILLE/SC - LAURO CARNEIRO DE LOYOLA GERÊNCIA DE OPERAÇÕES E SEGURANÇA - JVOP COMPARATIVO OPERACIONAL 2015/2016/2017

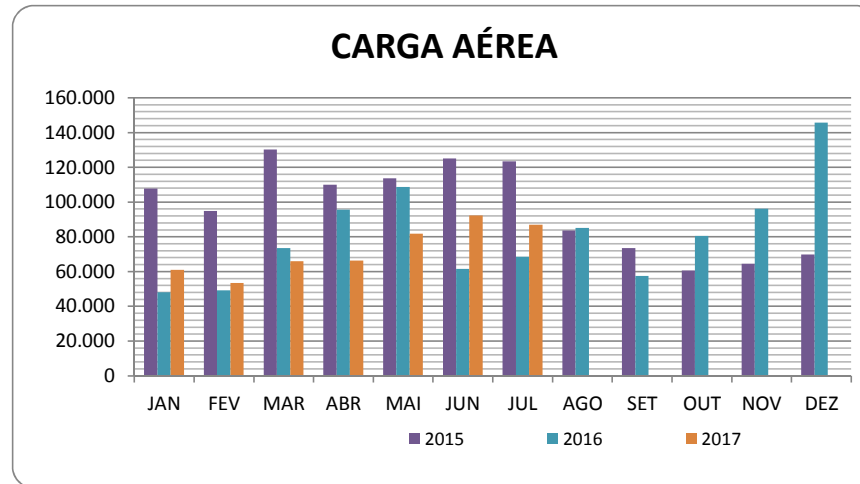
MESES	AERONAVES (Pou+Dec)			Crescimento
	2015	2016	2017	
JAN	798	779	630	-19,13%
FEV	742	694	565	-18,59%
MAR	851	713	607	-14,87%
ABR	859	726	600	-17,36%
MAI	877	672	606	-9,82%
JUN	862	711	647	-9,00%
JUL	987	833	659	-20,89%
AGO	1.011	789		-100,00%
SET	910	789		-100,00%
OUT	783	698		-100,00%
NOV	900	691		-100,00%
DEZ	867	617		-100,00%
<b>Total Período</b>	<b>10.447</b>	<b>8.712</b>	<b>4.314</b>	<b>-50,48%</b>



MESES	PASSAGEIROS (Emb + Des) (Dom + Int)			Crescimento
	2015	2016	2017	
JAN	43.217	40.613	39.228	-3,41%
FEV	35.712	33.538	32.379	-3,46%
MAR	42.211	37.855	41.169	8,75%
ABR	42.789	38.134	39.972	4,82%
MAI	42.509	45.538	39.713	-12,79%
JUN	38.828	42.781	35.628	-16,72%
JUL	48.758	56.972	39.064	-31,43%
AGO	46.256	47.754		-100,00%
SET	41.713	43.759		-100,00%
OUT	46.057	45.996		-100,00%
NOV	43.898	44.864		-100,00%
DEZ	44.156	38.700		-100,00%
<b>Total Período</b>	<b>516.104</b>	<b>516.504</b>	<b>267.153</b>	<b>-48,28%</b>



MESES	CARGA (Emb+Des)			Crescimento
	2015	2016	2017	
JAN	107.775	47.920	60.841	26,96%
FEV	94.762	49.074	53.269	8,55%
MAR	130.180	73.457	65.893	-10,30%
ABR	109.942	95.557	66.297	-30,62%
MAI	113.487	108.609	81.661	-24,81%
JUN	124.998	61.481	92.146	49,88%
JUL	123.250	68.503	86.838	26,77%
AGO	83.610	85.066		-100,00%
SET	73.506	57.318		-100,00%
OUT	60.462	80.414		-100,00%
NOV	64.481	96.138		-100,00%
DEZ	69.765	145.619		-100,00%
<b>Total Período</b>	<b>1.156.218</b>	<b>969.156</b>	<b>506.945</b>	<b>-47,69%</b>



MESES	BAGAGENS (Emb+Des)			Crescimento
	2015	2016	2017	
JAN	464.324	447.844	401.549	-10,34%
FEV	341.884	301.308	281.754	-6,49%
MAR	362.721	313.706	319.820	1,95%
ABR	376.154	316.491	316.210	-0,09%
MAI	377.808	399.457	307.667	-22,98%
JUN	367.524	375.225	283.651	-24,41%
JUL	533.703	575.701	362.823	-36,98%
AGO	438.781	441.932		-100,00%
SET	384.471	386.039		-100,00%
OUT	432.898	420.629		-100,00%
NOV	399.007	385.862		-100,00%
DEZ	468.079	373.893		-100,00%
<b>Total Período</b>	<b>4.947.354</b>	<b>4.738.087</b>		<b>-100,00%</b>

